

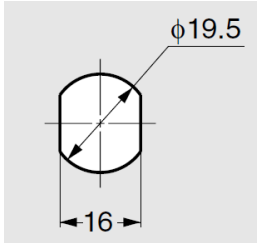
## GSN-711 Cam Lock

### Features

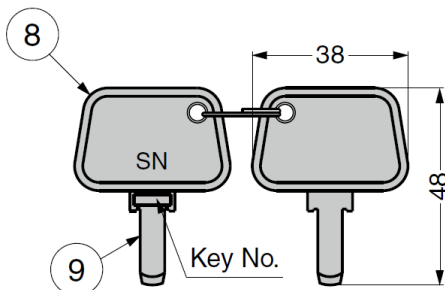
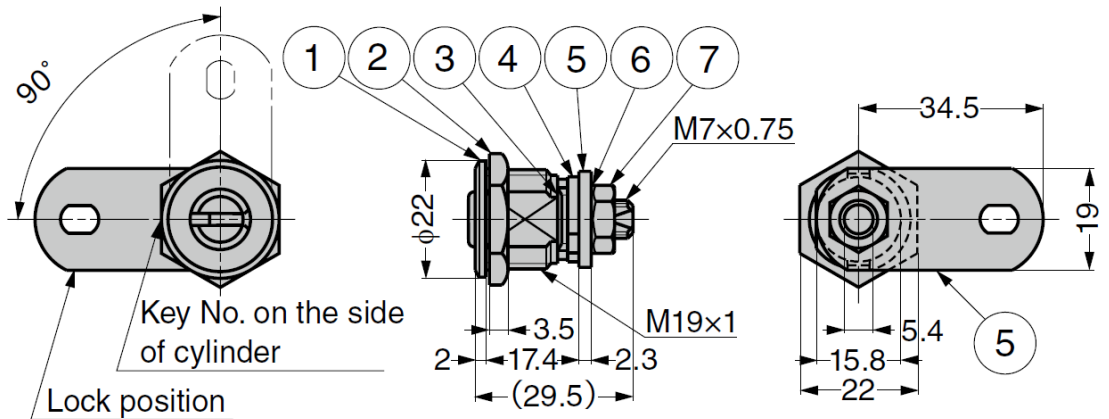
- Suitable for vending machine, ATM and coin locker applications, etc.
- Reversible key can only be removed when locked (90° rotation), and ensures that the application is properly locked
- For keyed differently option, max. 1500 key changes available (made-to-order)



### Cut Out Dimensions



No.	Part Name	Material	Finish/Colour
①	Body	Brass	Chrome
②	Large Hex Nut	Steel (SUM)	Coloured Zinc Chromate
③	Ring	Stainless Steel (SUS304)	Plain
④	Angle Restricting Cam	Steel (SPCC)	Clear Zinc Chromate
⑤	Cam		
⑥	Washer	Steel (SUP)	
⑦	Small Hex Nut	Steel (SWRM)	Coloured Zinc Chromate
⑧	Cover	ABS	Black
⑨	Key	Brass	Nickel



Part No.	Key Type	Door Thickness
GSN-711-8-D	Keyed Alike	0.1 ~ 9